

Plan of St Leonard's Church (not to scale), showing location numbers. The following locations are not shown:

- 10: Crypt
- 11: Exterior
- 12: Organ Stairs
- 13: Ringing Chamber

Pillars are numbered P1 to P12

**PHOTO RECORD SHEET****Site: St Katherine's Chapel****Location no: 1****Surveyor(s): Lynda Ryan & Anne Petrie****Date: 22 February 2019**

No.	Postion	Description
1	Archway top left Top stone	6 crosses, one partially obscured; compass-drawn circle
2	Archway top left Top stone	Geometric figure and shallow cross
3	Archway left 4 <sup>th</sup> stone down	Fish and cross
4	Archway left 6 <sup>th</sup> stone down	Ship
5	Archway left interior 2 <sup>nd</sup> stone down	Vertical parallel lines; writing, indecipherable & ? diamond-shaped merel
6	Archway left interior 4th stone down	Fish & small initials SD
7	Archway left interior 7th stone down	Crosses
8	Archway left interior 9th stone down	Cross
9	Archway right interior 3 <sup>rd</sup> stone down	?trees and fish
10	Archway right interior 5 <sup>th</sup> stone down	Large initial 'D'
11	Archway right 2 <sup>nd</sup> stone down	Crosses
12	Archway right 4 <sup>th</sup> stone down	One or possibly two pentangles and part of two compass drawn circles
13	Window ledge	Writing. Only 'p' decipherable
14	Window ledge	Inverted double V and lines
15	Right of window	Compass drawn daisy wheel

16	Behind altar	Consecration cross
----	--------------	--------------------

PHOTOS

1 (1)



1(2)



1 (3)



1 (4)



1(5)



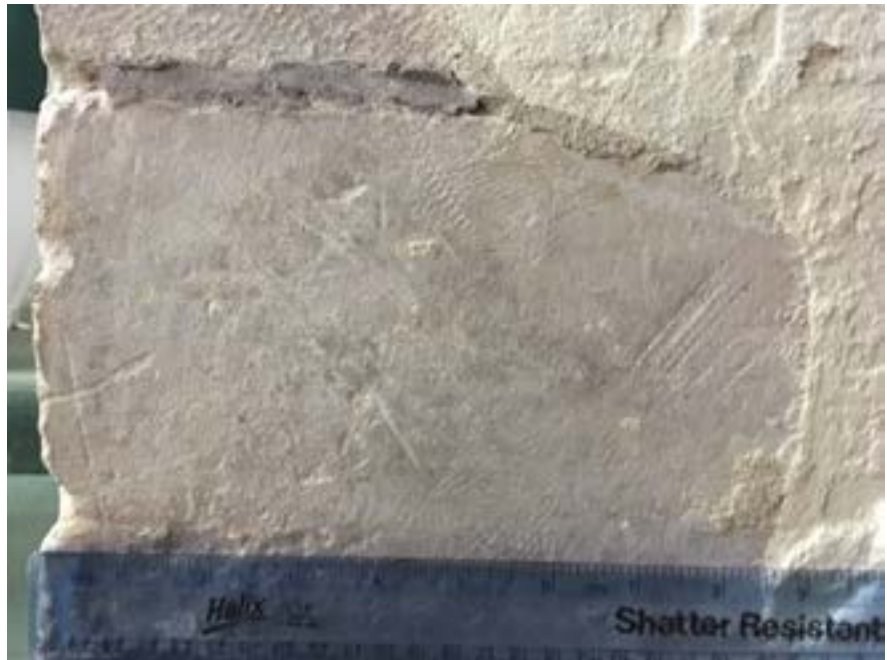
1(6)



1 (7)



1 (8)



1 (9)



1 (10)



1 (11)



1 (12)







1 (13)

1 (14)



1 (15)



1(16)



**PHOTO RECORD SHEET**

**Site: North Choir Aisle**

**Location no: 2**

**Surveyor(s): Lynda Ryan & Anne Petrie**

**Date: 25 February 2019**

No.	Postion	Description
1	Pillar 1	Initials or double v with embellishment
2	Pillar 2	Initials TV
3	Pillar 2	Ladder

**PHOTOS**

2 (1)



2 (2)



2 (3)



**PHOTO RECORD SHEET**

**Site: North Transept**

**Location no: 3**

**Surveyor(s): Lynda Ryan & Anne Petrie**

**Date: 25 February 2019**

No.	Position	Description
1	Door frame left	Design of triangular chips

**PHOTO**

3(1)



## PHOTO RECORD SHEET

Site: North Aisle

Location no: 4

Surveyor(s): Lynda Ryan & Anne Petrie

Date: 25 February 2019

No.	Position	Description
1	To left of door to stairs	Ritual protection mark
2	To left of door to stairs	Cross & ritual protection mark
3	To right of door to stairs	Canopy
4	Pillar 3	Compass drawn daisy wheels
5	Pillar 3	Triangle with vertical & horizontal lines
6	Pillar 3	Cross
7	Pillar 3 Base	Initials R H
8	Pillar 4 Base	'Anton'

## PHOTOS

4 (1)



4 (2)



4 (3)



4 (4)



4 (5)





4 (6)



4 (7)



## PHOTO RECORD SHEET

Site: West Vestry

Location no: 5

Surveyor(s): Lynda Ryan & Anne Petrie

Date: 4 March 2019

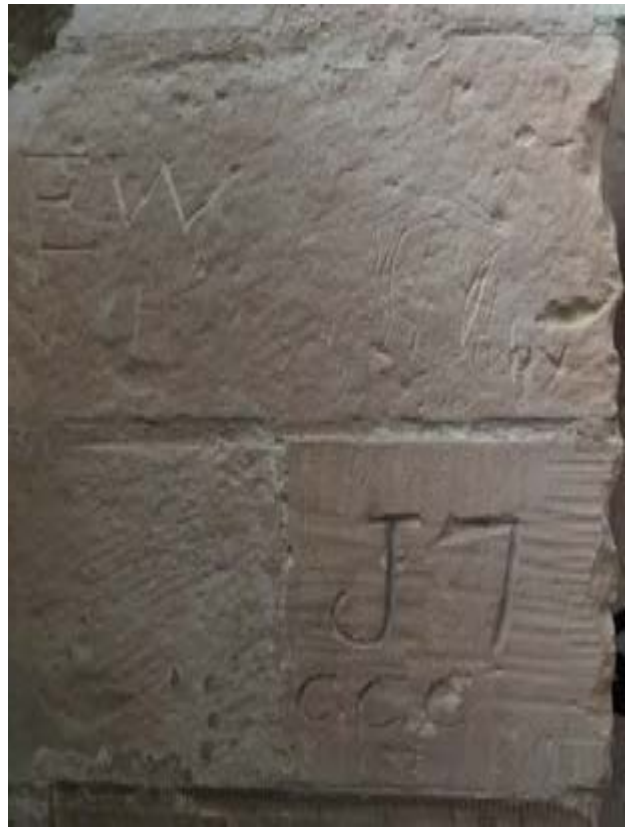
No.	Position	Description
1	Left of tower door	Initials ?JCH and date 1795. (Partly behind pipe)
2	Right of east door	Initials & dates – EW; WH; illegible name with date 1892; J7; CCC, 1804
3	Right of east door	Initials & numerals – i; x; x; 4; W; E
4	Right of east door	Initial T

## PHOTOS

5 (1)



5 (2)



5 (3)



5 (4)



# PHOTO RECORD SHEET

Site: South Aisle

Location no: 6 - Pillar 7

Surveyor(s): Lynda Ryan & Anne Petrie

Date: Date: 4 March 2019

No.	Position	Description
1	Pillar 7	Triangle & ?9
2	Pillar 7	Part of compass-drawn circle filled with vertical lines
3	Pillar 7	2 compass-drawn circles
4	Pillar 7	Canopy
5		
6	Pillar 7	Merel
7	Pillar 7	Merel

## PHOTOS

6 (1)



6 (2)



6 (3)



6 (4)



6 (6)



6 (7)





**PHOTO RECORD SHEET****Site: South Aisle****Location no: 6 - Pillar 8****Surveyor(s): Lynda Ryan & Anne Petrie****Date: Date: 18 March 2019 & 25 March 2019****NB This pillar is octagonal and each face is comprised of 11 rectangular stones. We have numbered them 1-11 from the top and each face A-H**

No.	Position	Description
8	Pillar 7 Face A Stone 2	?cross
9	Pillar 7 Face A Stone 5	Initial P
10	Pillar 7 Face A Stone 8	3 crosses, merel
11	Pillar 7 Face A Stone 9	Cross
12	Pillar 7 Face A Stone 10	Part of compass drawn circle with intricate in-fill
13	Pillar 7 Face B Stone 9	Ship
14	Pillar 7 Face B Stone 11	Compass drawn circle
15	Pillar 7 Face C Stone 8	Daisy wheel
16	Pillar 7 Face C Stone 9	Daisy wheel & small consecration cross
17	Pillar 7 Face C Stone 11	Ship
18	Pillar 7 Face D Stone 7	St George & the Dragon
19		
20	Pillar 7 Face D Stone 9	Initials BT and cross
21		
22	Pillar 7 Face D Stone 11	Fish and cross
23	Pillar 7 Face E Stone 9	Knight with sword

24	Pillar 7 Face E Stone 11	Lower part of 2 legs, walking; fish or leaf
25	Pillar 7 Face F Stone 6	'Marc'
26	Pillar 7 Face F Stone 7	Cat & ?dog
27	Pillar 7 Face F Stone 9	Knight
28	Pillar 7 Face E Stone 9	Sword of knight in 27
29	Pillar 7 Face E Stone 10	Cross
30	Pillar 7 Face E Stone 11	Ship & fish
31	Pillar 7 Face F Stone 5	? Writing (illegible); cross and triangle (top of ship below)
32	Pillar 7 Face F Stones 5 6 & 7	Ship
33	Pillar 7 Face F Stone 8	Parts of compass drawn circle
34	Pillar 7 Face F Stone 9	Man carrying ?pie
35	Pillar 7 Face F Stone 11	Ship
36	Pillar 7 Face G Stone 4	'A Gore 1982'
37	Pillar 7 Face G Stone 9	Crosses
38	Pillar 7 Face G Stone 10	Ship
39	Pillar 7 Face G Stone 11	Crosses

**PHOTOS**

6 (8)



6 (9)



6 (10)



6 (11)



6 (12)



6 (13)



6 (14)



6 (15)



6 (16)



6 (17)



6 (18)



6 (18) Enhanced





6 (20)



6 (22)



6 (23)



6 (23) Enhanced



6 (24)



6 (25)



6 (26)



6 (26) enhanced



6 (27)



6 (27) enhanced



6(28)



6(29)



6 (30)



6 (31)



6 (32)



6 (33)





6 (34)



6 (34) enhanced



6 (35)



6 (36)



6 (37)



6 (38)



6 (39)



**PHOTO RECORD SHEET****Site: South Aisle****Location no: 6 Pillars 8, 9 and 10****Surveyor(s): Lynda Ryan and Anne Petrie****Date: 25 March 2019**

<b>No.</b>	<b>Postion</b>	<b>Description</b>
40	Pillar 8	3 overlapping circles; the central one contains 3 small circles inside the perimeter
41	Pillar 8	Cross
42	Pillar 8	Daisy wheel & apotropaic mark
43	Pillar 9	Daisy wheel
44	Pillar 9	X in a rough circle
45	Pillar 9	Fish
46	Pillar 9	Unknown symbols
47	Pillar 9	Ship
48	Pillar 9	2 fish and ?fisherman
49	Pillar 10 west of Norman arch	Cross
50	Pillar 10 north face of Norman arch	Masons' marks
51	Pillar 10 north face of Norman arch	Masons' marks
52	Pillar 10 north face of Norman arch	Ship
53	Pillar 10 east of Norman arch	Triangles
54	Pillar 10 east of Norman arch	Unknown symbols
55	Pillar 10 east of Norman arch	Apotropaic marks and dolphin
56	Pillar 10 east of Norman arch	Unknown symbols
57	Pillar 10 east of Norman arch	Apotropaic marks

**PHOTOS**

6(40)



6 (40) close-up



6 (41)



6 (42)



6 (43)



6 (44)





6 (45)



6 (46)



6 (47)



6 (48)



6 (49)



6 (50)



6 (51)



6 (52)



6 (53)



6 (54)



6 (55)



6 (56)



6 (57)



**PHOTO RECORD SHEET**

**Site: South Choir Aisle**

**Location no: 7 Pillars 11 and 12**

**Surveyor(s): Lynda Ryan and Anne Petrie**

**Date: 8 April 2019**

<b>No.</b>	<b>Postion</b>	<b>Description</b>
1	Pillar 11	? several fish
2	Pillar 11	Apotropaic marks
3	Pillar 11	Initials KR back to front so could be R K
4	Pillar 11	Writing - indistinct
5	Pillar 11	Writing - indistinct
6	Pillar 11	Writing - indistinct
7	Pillar 11	Small apotropaic mark or capital 'I'
8	Pillar 11	Writing - indistinct
9	Pillar 11	Writing – indistinct and ragged staff
10	Pillar 12	Initial 'A'
11	Pillar 12 base	Apotropaic marks
12	Pillar 12 base	Initial 'T' several times
13	Pillar 12 base	Merel
14	Pillar 12 ledge	Cross
15	Pillar 12 ledge	Crosses
16	Pillar 12 ledge	Apotropaic marks
17	Pillar 12 ledge	Apotropaic marks
18	Pillar 12 ledge	2 crosses



PHOTOS

7 (1)



7 (2)



7 (3)



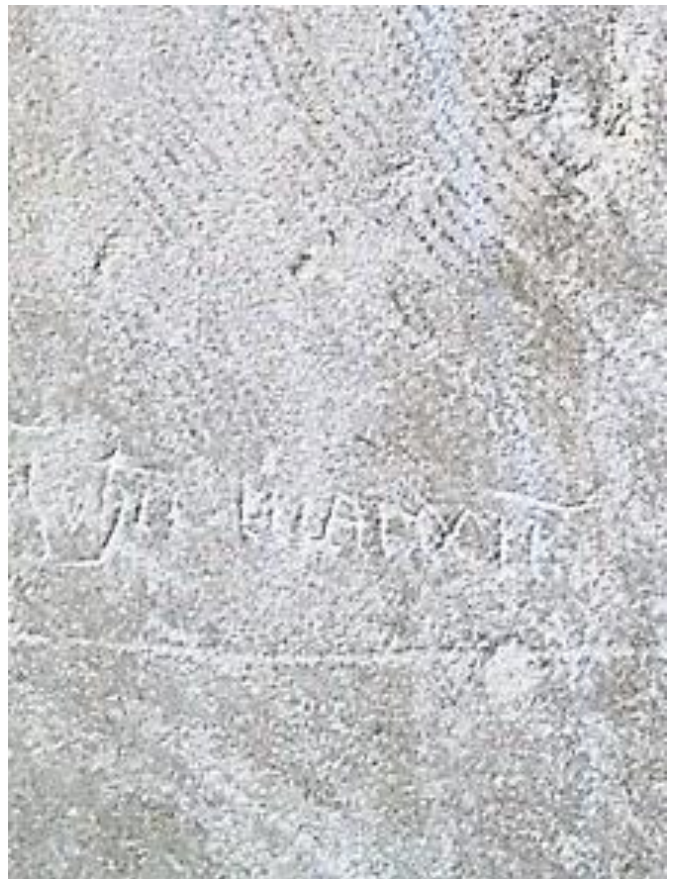
7 (4)



7 (5)



7 (6)



7 (7)



7 (8)



7 (9)



7 (10)



7 (11)



7 (12)



7 (13)



7 (14)



7 (15)



7 (16)





7 (17)



7 (18)



**PHOTO RECORD SHEET****Site: Nave****Location no: 8****Surveyor(s): Linda Ryan & Anne Petrie****Date: 23 April 2019**

<b>No.</b>	<b>Postion</b>	<b>Description</b>
1	Pillar 11	Intials 'T L'
2	Pillar 11	Initials E, A and H
3	Pillar 11	Initials 'T P' 1607
4	Pillar 11	2 x initial T
5	Pillar 11	4 vertical lines enclosed in a frame
6	Pillar 11	Initial T P HN enclosed in frame
7	Pillar 11	Initial R
8	Pillar 11	Initial T H 1698 and HR
9	Pillar 11	Initials DW 1666. Other possible intials
10	Pillar 11	Initials HC 167?
11	Pillar 2	Numeral 1 & initials MC
12	Pillar 2	Initials TV
13	Pillar 2	Initials MM and ? heraldic mark
14	Pillar 2	Circle beneath a canopy
15	Pillar 2	Cross in a square box; 'M/T 2-7-1978 xx' ; initials AB & apotropaic marks
16	Pillar 2	Initial R & apotropaic marks
17	Pillar 2	Initial M in a frame; initials L and R
18	Pillar 2	Initials TM ? A
19	Pillar 2	2 crosses & apotropaic mark
20	Pillar 2	Initials TS 1669 in a frame

PHOTOS

8 (1)



8 (2)



8 (3)



8 (4)



8 (5)



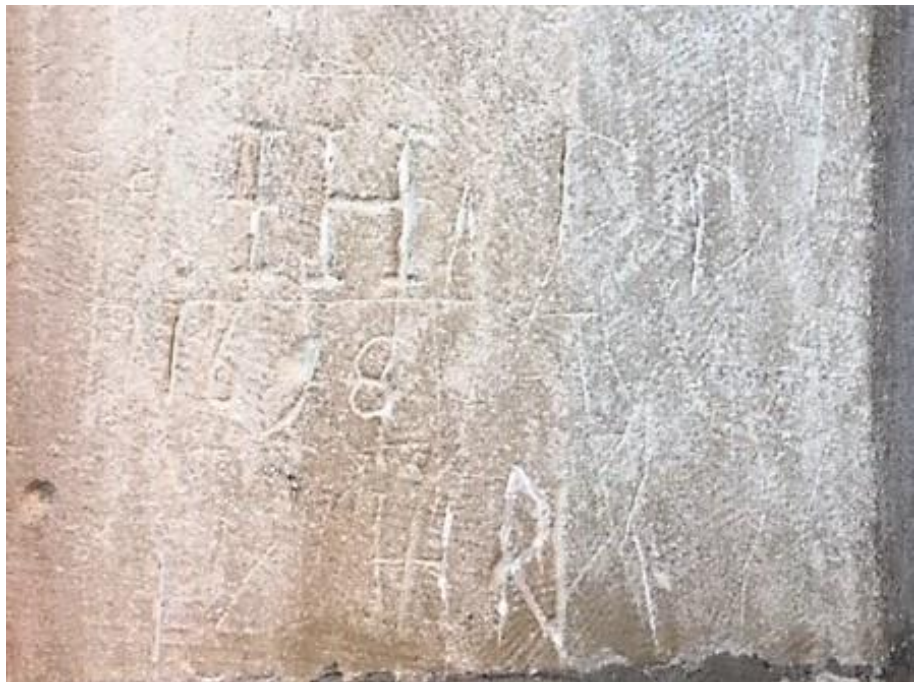
8 (6)



8 (7)



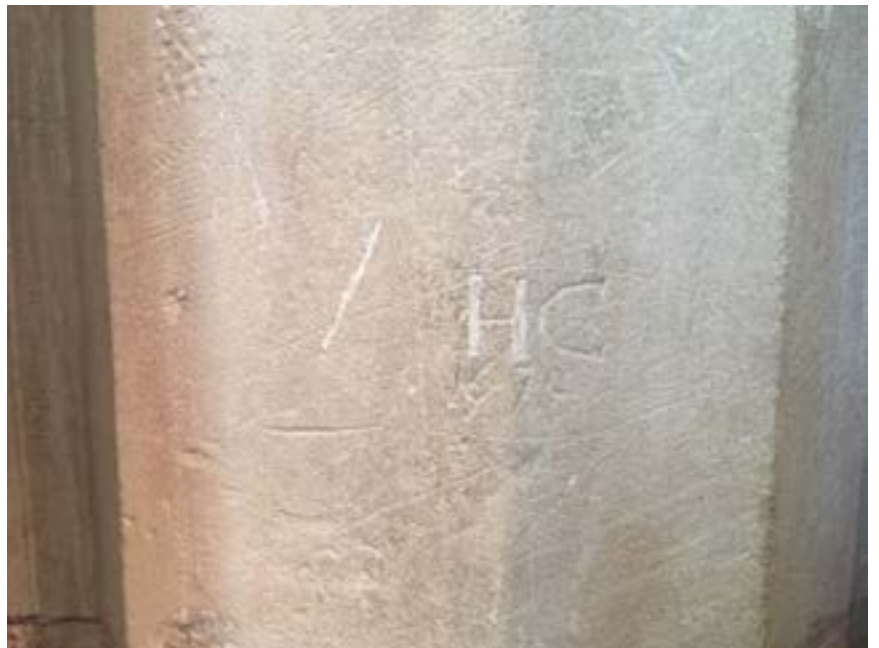
8 (8)



8 (9)



8 (10)



8 (11)



8 (12)





8 (13)



8 (14)



8 (15)



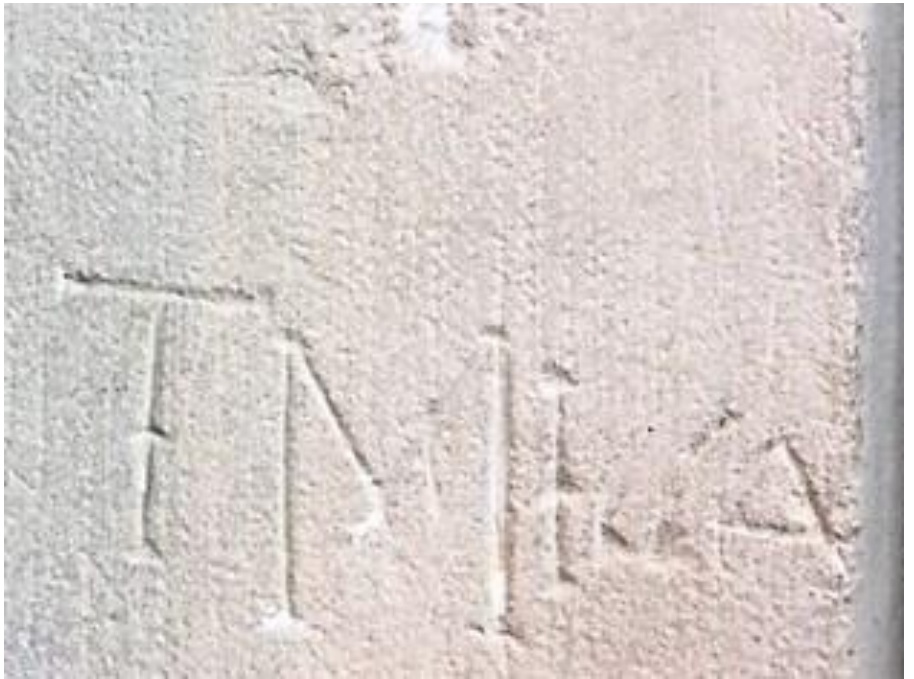
8 (16)



8 (17)



8 (18)



8 (19)



8(20)



## PHOTO RECORD SHEET

Site: Chancel

Location no: 9

Surveyor(s): Lynda Ryan & Anne Petrie

Date: 29 April 2019

No.	Position	Description
1	Aumbry, west face	Pentagon
2	Aumbry interior east face	Initials TP, IFS & 'in memory 3/4/1974 ... illegible G. Schaefer' remainder illegible
3	Aumbry interior east face	Initials RD, RB, TG, TB, TS
4	Aumbry interior east face	Initials TK, I, TL, FB, MP, FB; double cross
5	Aumbry interior back	Letter M in a square frame
6	Aumbry interior back	Initials CV & FV and ?cricket ball
7	Aumbry interior back	Initials ST and TS (the S is reversed in both cases)
8	Aumbry interior back	Initial R in a frame and two sets of illegible initials in frames
9	Aumbry interior back	Initials MP, WT, TF, TR and in a frame FBNF
10	Aumbry interior back	Initials TR, HF, MS and FS (the S is reversed in both cases)
11	Aumbry interior back	Initials WP
12	Aumbry interior back	Initials WH and 16IX
13	Aumbry interior back	Initials TC and 1664
14	Aumbry interior back	Initials CC and 181?0
15	Aumbry base	Apotropaic marks
16	Aumbry east face	Initials HH and D

17	Aumbry east face	Initials IC and 168
18	Aumbry east face	Initials DL
19	North wall	Concentric circles with lines

**PHOTOS**

9 (1)



9 (2)



9 (3)



9 (4)



9 (5)





9(6)



9(7)



9 (9)



9 (10)



9 (11)



9 (12)



9 (13)



9 (14)



9 (15)



9 (16)



9 (17)



9 (18)



9 (19)



**PHOTO RECORD SHEET****Site: Crypt****Location no: 10****Surveyor(s): Lynda Ryan & Anne Petrie****Date: 20 May 2019**

No.	Position	Description
1	Exterior east facing	4 crosses, 3 inside circles
2	Exterior east facing	Right angle with 2 diagonal lines
3	1 <sup>st</sup> pillar on right	Initials enclosed in a heart AFP & RS & VII 1818
4	1 <sup>st</sup> pillar on right (behind framed poster)	Illegible writing in frame
5	1 <sup>st</sup> pillar on right (behind framed poster)	Name 'Davey' and initials W ? in frame
6	1 <sup>st</sup> pillar on right (behind framed poster)	Initials I and H and JM in frame
7	1 <sup>st</sup> pillar west facing	Initials D ? and 1947
8	1 <sup>st</sup> pillar west facing	Parallel lines
9	1 <sup>st</sup> pillar west facing	2 crosses
10	1 <sup>st</sup> pillar west facing	Initials LA JS and 1915 and ?Edward
11	1 <sup>st</sup> pillar north facing	Initials DE
12	1 <sup>st</sup> pillar north facing	Initials WH
13	By 1 <sup>st</sup> window	?D Higgins 1960
14	By 2 <sup>nd</sup> widow	?part of ship, overwritten with '1904'
15	Pillar	Illegible writing



16	Pillar	G R ?Forbes Bayley
17	Pillar	A , 1624, WH

**PHOTOS**

10 (1)



10 (2)



10 (3)



10 (4)



10 (5)



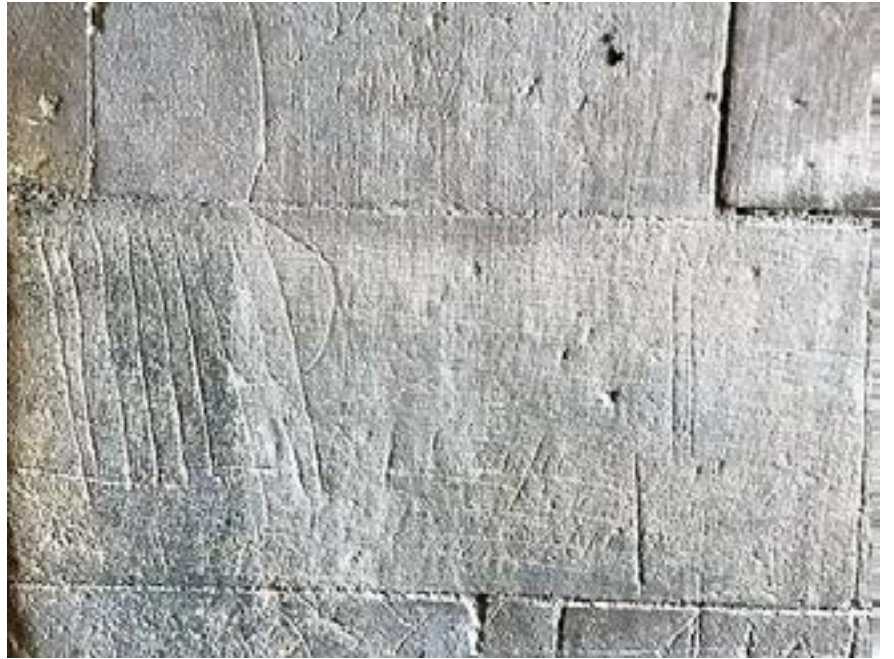
10 (6)



10 (7)



10 (8)



10 (9)



10 (10)



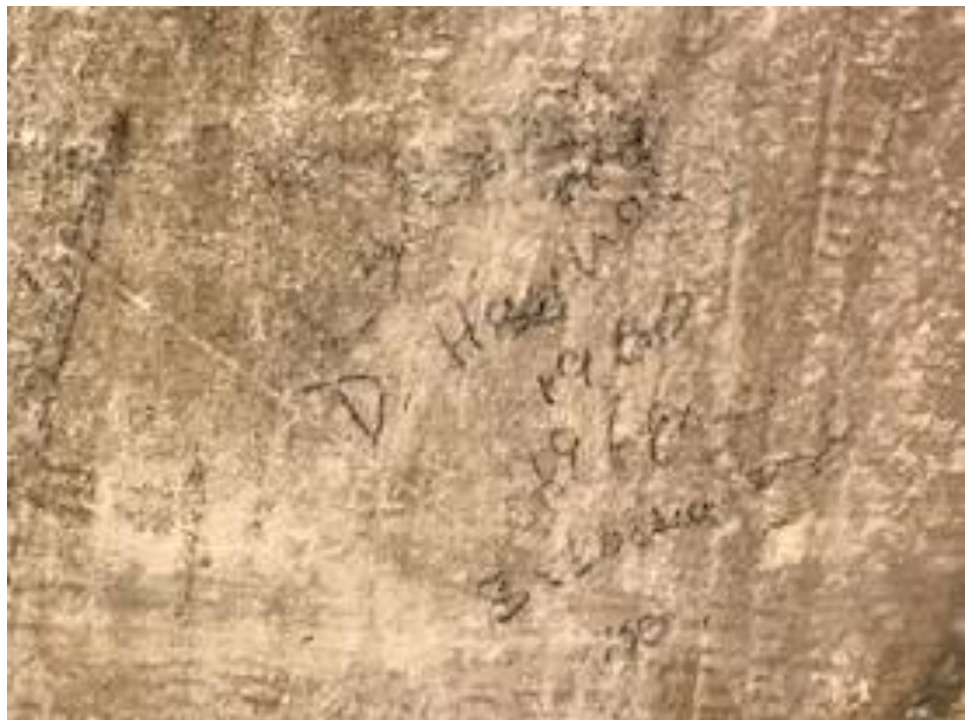
10 (11)



10 (12)



10 (13)



19 (14)



10 (15)





10 (16)



10 (17)



**PHOTO RECORD SHEET**

**Site: Exterior – Archway leading to south terrace**

**Location no: 11**

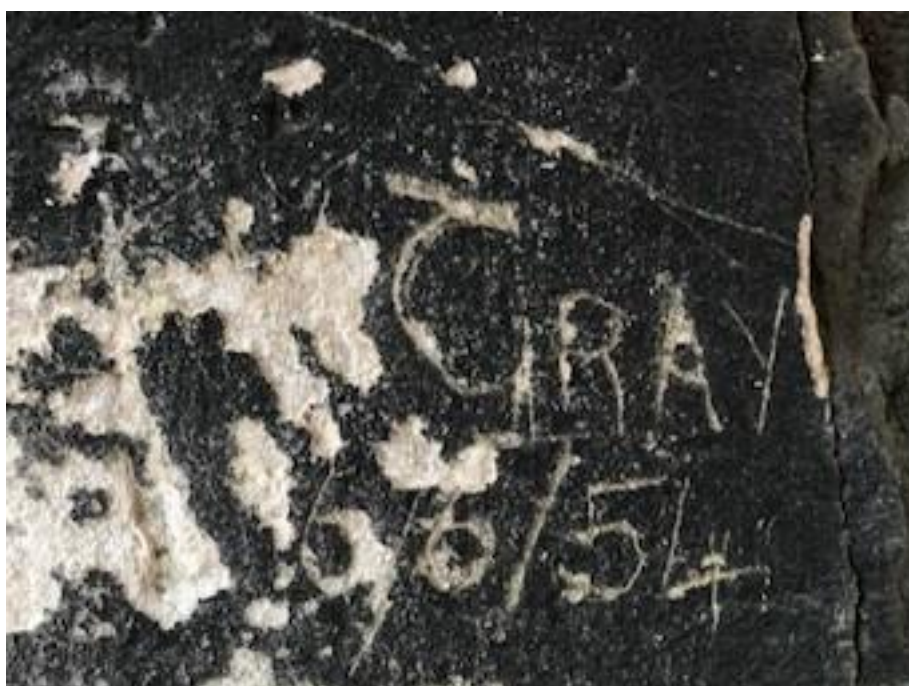
**Surveyor(s): Lynda Ryan & Anne Petrie**

**Date: 20 May 2019**

No.	Position	Description
1		GRAY 6/6/54
2		DAVID HOLLET THANET AIR TRAINING
3		FRANK E JOHNING 1213 DELMONT PARL CINCINNATI (USA) and HOME
4		SKINS 1997
5		JA WOOD and SIMON
6		M GOODSELL 1 MARCH 1927 DIED AT ? COTTAGE 3/7/47 AT REST
7		S HARRIES JULY 8 1945 EALING
8		ANN, JACK, TIGER in a frame. Other writing illegible except for 'STAFFORD'

**PHOTOS**

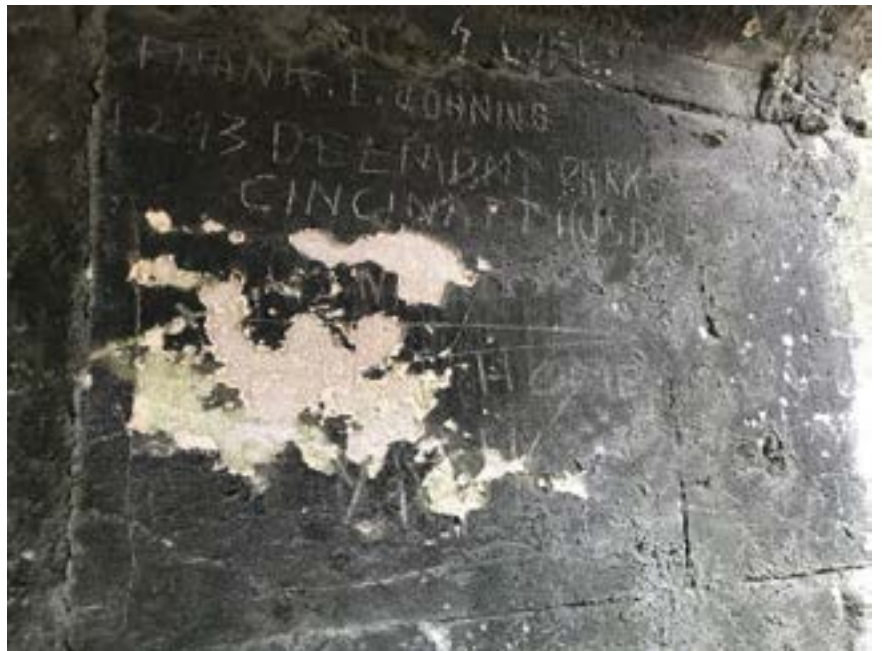
11 (1)



11 (2)



11 (3)



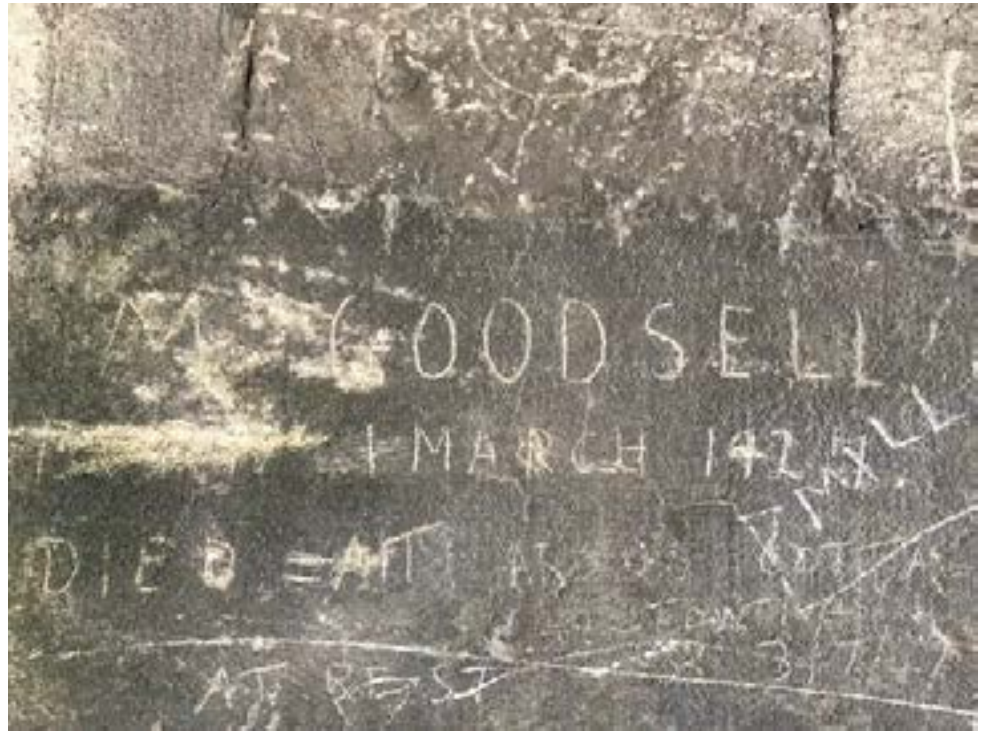
11 (4)



11(5)



11 (6)



11 (7)



11 (8)



## PHOTO RECORD SHEET

Site: Stairs behind organ

Location no: 12

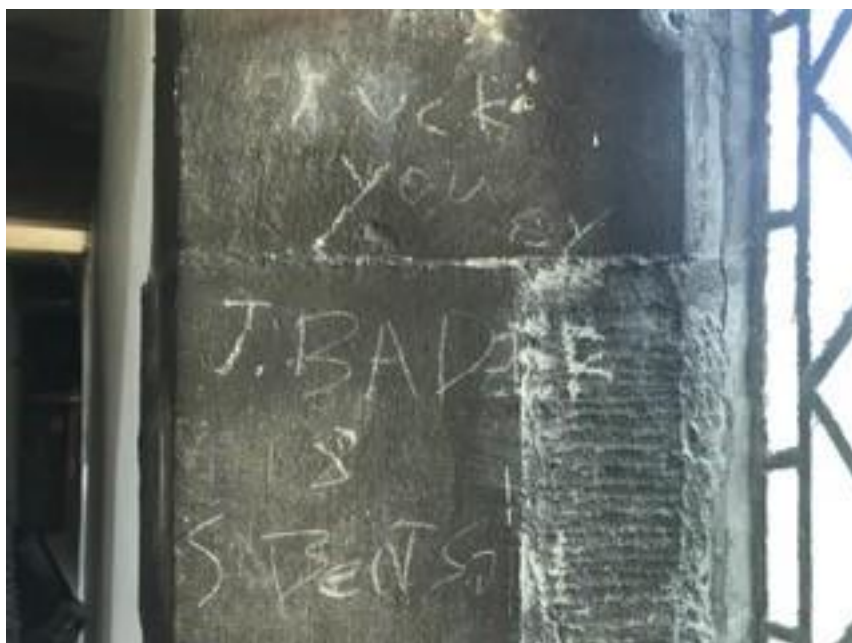
Surveyor(s): Linda Ryan and Brinley Hughes

Date: 2 July 2019

No.	Position	Description
1	Wall	Obscene comment 'by J Bader & S. Benson'
2	Wall	'J. Bader 3/9/96 S. Benson 3/9/96'
3	Wall	'R.B. 1923 23'
4	Wall	Unknown shape
5	Wall	Apotropaic mark
6	Wall	Apotropaic mark
7	Wall	Initials HWD

## PHOTOS

12 (1)



12 (2)



12 (3)





12 (4)



12 (5)



12 (6)



12 (7)



## PHOTO RECORD SHEET

Site: Ringing Chamber

Location no: 13

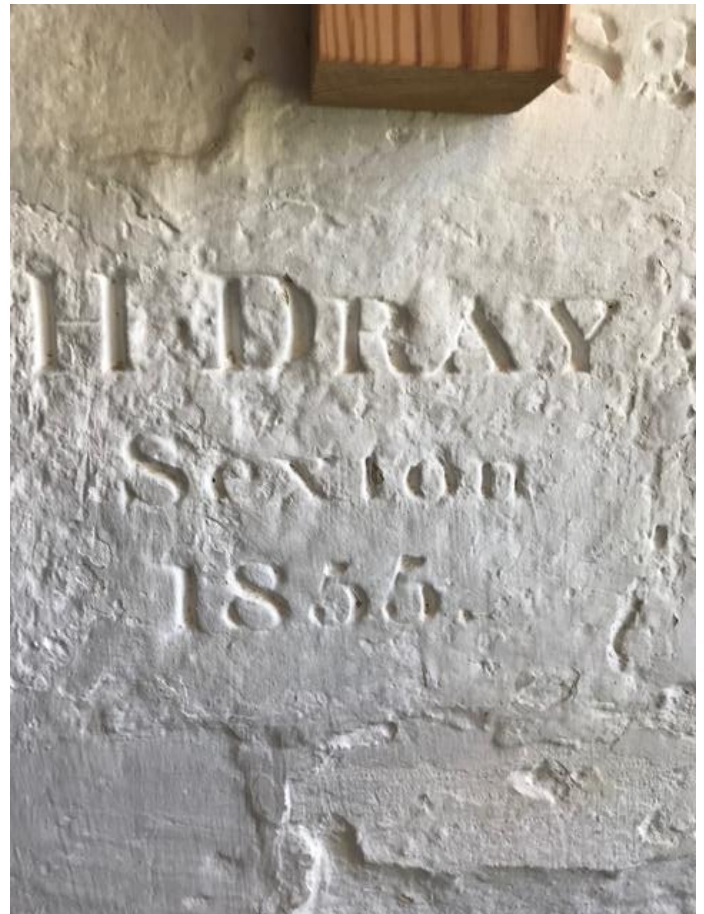
Surveyor(s): Linda Ryan and Brinley Hughes

Date: 2 July 2019

No.	Position	Description
1	Wall	'H. Dray Sexton 1855'
2	Wall	Partially obscured 'Castle exton 1824'

## PHOTOS

13 (1)



13 (2)

