

# Remember St Peter and St Paul

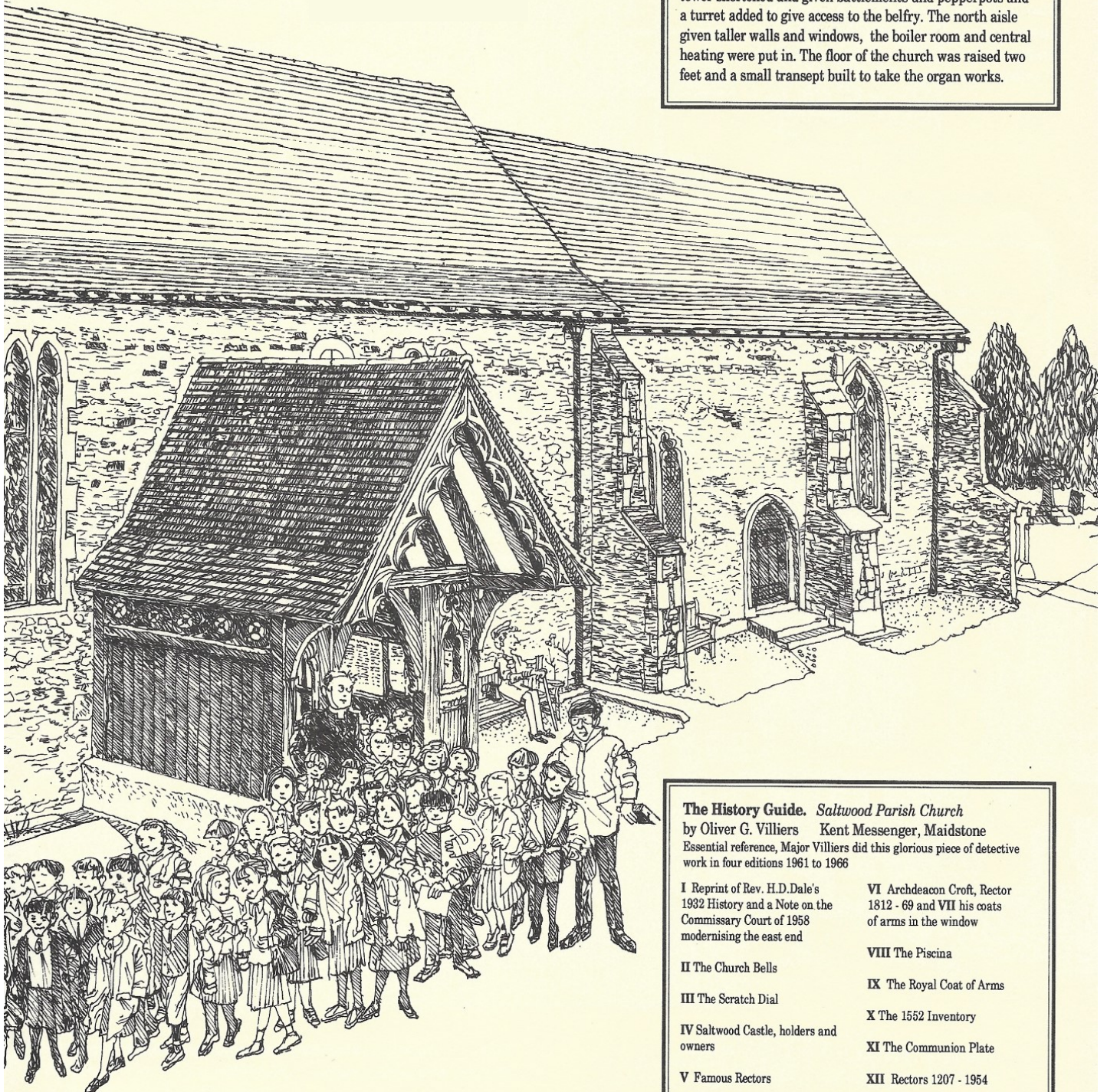
THE PARISH CHURCH OF SALTWOOD  
HYTHE, KENT

From a series of guides  
drawn and designed  
by Rufus Segar

1

The church has a Norman nave, built 1100 to 1150 AD on the site of a Saxon church. The tower with a saddleback roof and the north aisle were added in 1200. In 1330 the small chancel was extended; two tall windows, the piscina and the grand east window, made with network tracery.

Considerable changes took place in the 19th century, the tower shortened and given battlements and pepperpots and a turret added to give access to the belfry. The north aisle given taller walls and windows, the boiler room and central heating were put in. The floor of the church was raised two feet and a small transept built to take the organ works.



**The History Guide. Saltwood Parish Church**  
by Oliver G. Villiers Kent Messenger, Maidstone  
Essential reference, Major Villiers did this glorious piece of detective  
work in four editions 1961 to 1966

I Reprint of Rev. H.D. Dale's  
1932 History and a Note on the  
Commissary Court of 1958  
modernising the east end

II The Church Bells

III The Scratch Dial

IV Saltwood Castle, holders and  
owners

V Famous Rectors

VI Archdeacon Croft, Rector  
1812 - 69 and VII his coats  
of arms in the window

VIII The Piscina

IX The Royal Coat of Arms

X The 1552 Inventory

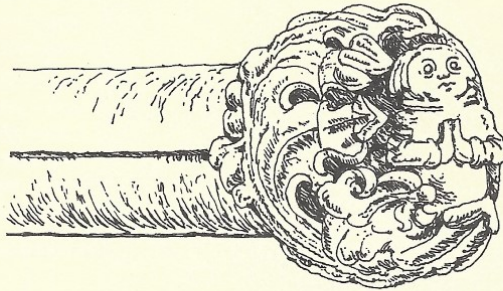
XI The Communion Plate

XII Rectors 1207 - 1954

**The present altar** is modern, of Sussex oak and Kent pearwood, given by Sir Kenneth and Lady Clark in 1958. At the same time, in the face of some opposition by older parishioners, the reredos behind the altar was pulled down. This was given in 1889 by the twelve children of Canon Hodgson, who was Rector of Saltwood from 1879 to 1888.

**Two elephants** are to be found in the church, look carefully at the two brass plates below the Knollys window of 1878, one is plain to see and the other one is quite artfully hidden.

**The piscina** was built around 1300 drains into consecrated ground and is used for rinsing sacred vessels. There is another, smaller one, at the south side of the altar of the Lady Chapel in the north aisle.



**An angel** is in the last oak leaf cluster facing the congregation, under the Knollys window. There is a companion over on the north wall by the organ.

**The Croft Lights**

In the left window is the coat of arms of Archdeacon James Croft, Rector of Saltwood for 57 years.

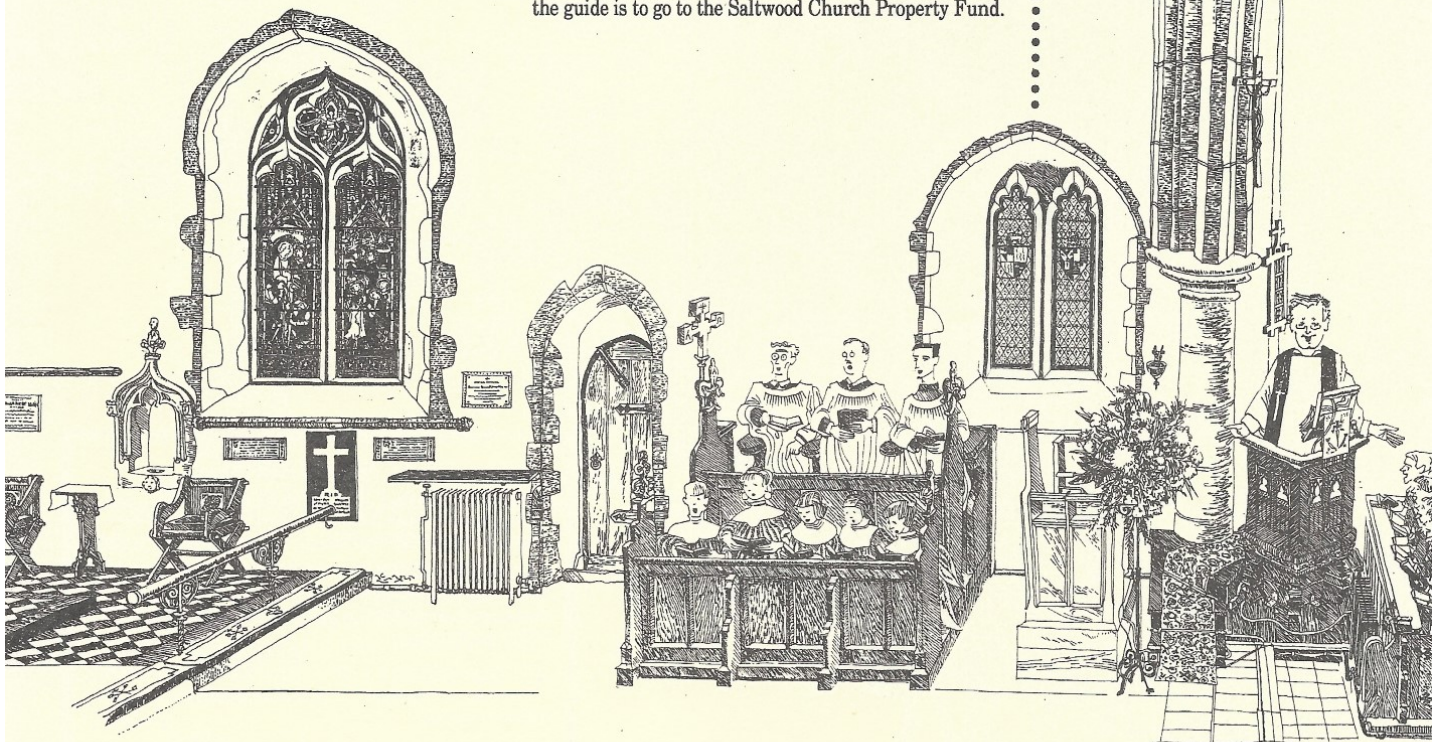
The right window bears the arms of his father in law, Charles Manners Sutton, Archbishop of Canterbury 1805 - 28, from whom many preferments flowed.

The diamond panes are dotted with keys and swords, emblems of St Peter and of St Paul, these motifs can be found all over the church.

**The Saltwood Plate**  
The parish owns some valuable antique sacred vessels, photographs and details are in Villiers. These are on display in the Canterbury Cathedral Treasury.

**Church publications.** The tall desk by the porch entrance displays the **Parish Magazine, Outlook** and other leaflets and publications for parishioners and visitors.

**This Church Guide.** The money raised from the sale of the guide is to go to the Saltwood Church Property Fund.



**The Knollys Window 1878** for Caroline Augusta, wife of William Knollys, Rector 1869 to 1879.

Peter escapes from prison: Acts 12. 11 and 12. 5.

**The Choir** is in attendance at Sunday morning services, at weddings by arrangement and at special services.

The Barrow Windows each side of the door into the nave are to:

Colonel Percy Stanley Barrow CB,  
CMG The 19th Prince of Wales Own  
Hussars 1887  
and  
Colonel Charles Lousada Thesiger  
Barrow DSO, The Cameronians  
(Scottish Rifles) 1893

Both are buried in the churchyard.

**The Window Texts**

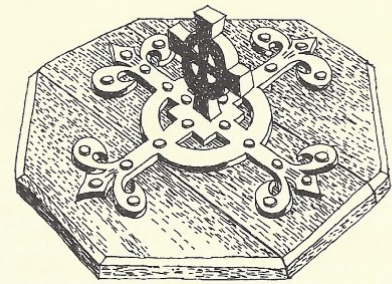
above the font:

The Transfiguration:  
St Matthew 17. 1 to 8  
and

The Ascension:  
St Luke 24. 50 to 53  
and St John 14. 27.

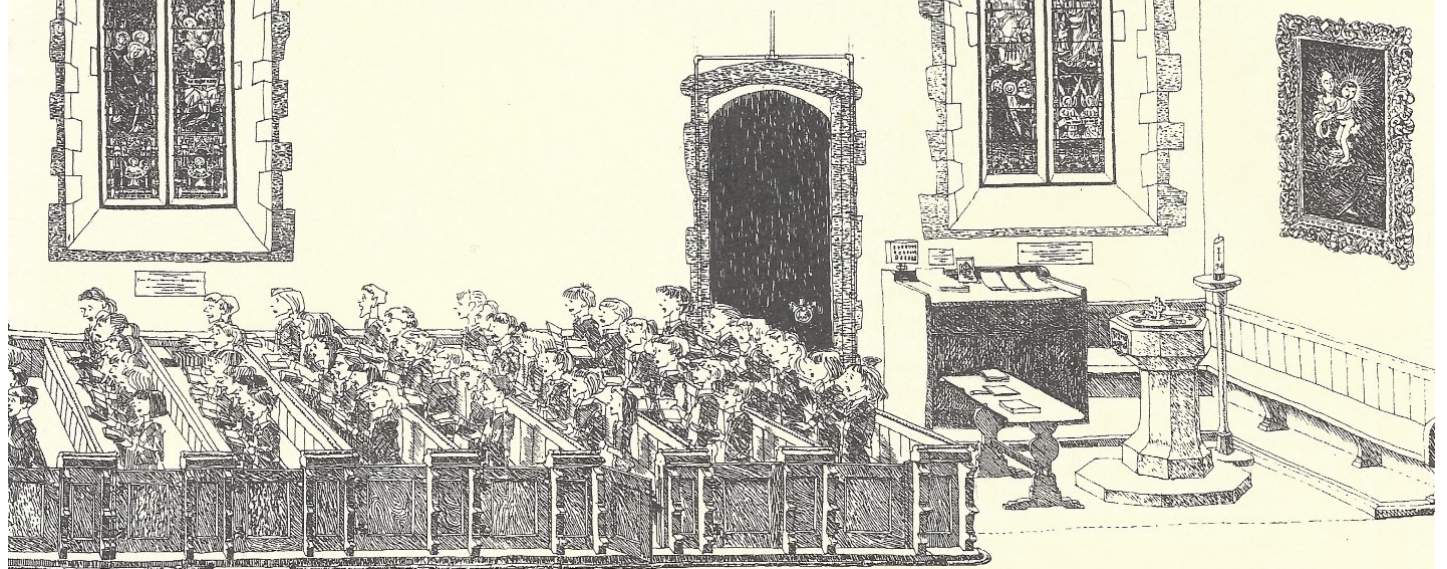
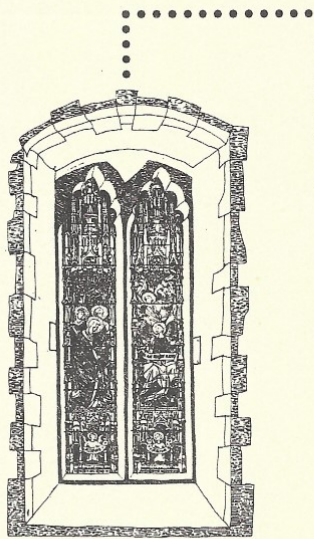
below:

The Resurrection:  
St Matthew 28. 1 to 10.



The Font was made about 1500, the shield on the east side says Jehsu Marya, an invocation and expletive, an abbreviation of Jesus, Son of Mary, the words were used on Joan of Arc's banner in battle.

The font cover is Victorian.



The Congregation here is from Saltwood Church of England (Aided) Primary School, who usually come to church on Thursday mornings.

The Madonna and Child is strangely mannered, very strong and sentimental, after the style of the spanish painter Bartholomew Murillo 1618 - 82. The frame is a splendid froth of gilded feathers.

Published by The Rector  
The Reverend Canon Reg Humpriss  
The Rectory, Rectory Lane  
Saltwood CT21 4QA

Telephone Hythe 266932

**Church Services usually:**

**Sundays :** 8am Holy Communion.

10am Parish Eucharist.

Evensong and Address: 6pm (summer)

4.30pm winter.

**On first Sunday in the month:**

9am Holy Communion at **Pedlinge Chapel.**

10am Morning Service for all at **Saltwood.**

**On other Sundays** in term time Sunday  
School meets in the **Lads' Club** at 9.50am

**Wednesdays:** 10am Holy Communion

But check the weekly timetable of services  
posted in the church porch for frequent  
changes and extra services.

The **Parish Magazine** gives a detailed diary  
for each month.

Drawings © Rufus Segar 1994  
Printed by B & S Printers Hythe, Kent Tel. 0303 238033



**Saltwood Bellringers.** Hand ringers and tower ringers, they ring on Sundays and for weddings, they meet on Friday evenings.

**The Bells.** Four were recorded in 1552; five were cast by John Waylett in 1722 - 23 and were recast by Mears and Stainbrook in Whitechapel in 1912. A sixth tenor bell was given by Lawrence Hardy of Sandling Park at this recasting.

**The Friends of Saltwood Churchyard.** A working party meets at 9 o'clock each Thursday morning to nibble at the plants, trees and grounds, tidying up and preserving tranquillity.

The annual **Parish Directory**, free with the magazine each January, gives a brimming guide to all the working groups of the parish and activities in the village.

